



## Q. SOUTH SOUND LUXURY LIFESTYLE TOWNHOUSES #17

# FOR SALE

## KYD\$1,475,000

Current








'Q', South Sound located in the prestigious locale of South Sound offers a luxury lifestyle living. 2BR/2.5BA, 2900 sq. ft. townhouses offering modern architecture, two swimming pools, gym and 200 ft. beach.

### Location:

 **South Sound**

### Features:

-  **2900 Sq Ft.**
-  **2 Bedrooms**
-  **2.5 Bathrooms**
-  **Beach View, Pool View**
-  **Condominium**



SCAN ME TO FIND OUT MORE

MLS: 414413



### Edna Ebanks

Sales Associate  
edna.ebanks@remax.ky

**+1 (345) 949 0681**



### Heather Richards

Sales Associate  
heather.richards@remax.ky

**+1 (345) 943 8573**

remax.ky

member of  **cireba**





**FOR SALE**  
**KYD\$1,475,000**

Current

## Q. SOUTH SOUND LUXURY LIFESTYLE TOWNHOUSES #17



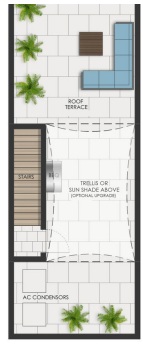
GARAGE



FIRST



SECOND



ROOF



**Edna Ebanks**

Sales Associate  
edna.ebanks@remax.ky

**+1 (345) 949 0681**



**Heather Richards**

Sales Associate  
heather.richards@remax.ky

**+1 (345) 943 8573**

remax.ky

member of **cireba**



# FOR SALE

## KYD\$1,475,000

Current

Q. SOUTH SOUND LUXURY LIFESTYLE  
TOWNHOUSES #17

### Property Features

Location	<b>South Sound</b>	MLS #	<b>414413</b>	View	<b>Beach View, Pool View</b>
Beds	<b>2</b>	Bathrooms	<b>2.5</b>	Sq. Ft	<b>2900</b>
Year	<b>2024</b>	Type	<b>Condominium</b>		

### Building Features

✓ Cable TV	✓ Dishwasher	✓ Living room
✓ City Water	✓ Garage: 2	✓ Microwave
✓ Dining area	✓ Kitchen area	✓ Multi-Zone AC

### Additional Information

Title	<b>Freehold</b>	Class	<b>Pre-Construction</b>	Total # of Units	<b>22</b>
Construction	<b>Block</b>	Land Certificate	<b>Not Issued</b>	Water Frontage	<b>Yes</b>
Floor Level	<b>1</b>	Stories	<b>3</b>	Foundation	<b>Pier &amp; Beam</b>
Strata #	<b>1</b>				

### Running Costs

Monthly Insurance	<b>CI\$1</b>	Sewage in Maintenance Costs	<b>Yes</b>	AC in Maintenance Costs	<b>No</b>
Monthly Maintenance Costs	<b>CI\$1</b>	Gardening in Maintenance Costs	<b>Yes</b>	TV in Maintenance Costs	<b>No</b>
Insurance Included in Maintenance	<b>No</b>	Pest in Maintenance Costs	<b>No</b>		



**Edna Ebanks**

Sales Associate  
edna.ebanks@remax.ky

**+1 (345) 949 0681**



**Heather Richards**

Sales Associate  
heather.richards@remax.ky

**+1 (345) 943 8573**

remax.ky

member of **cireba**