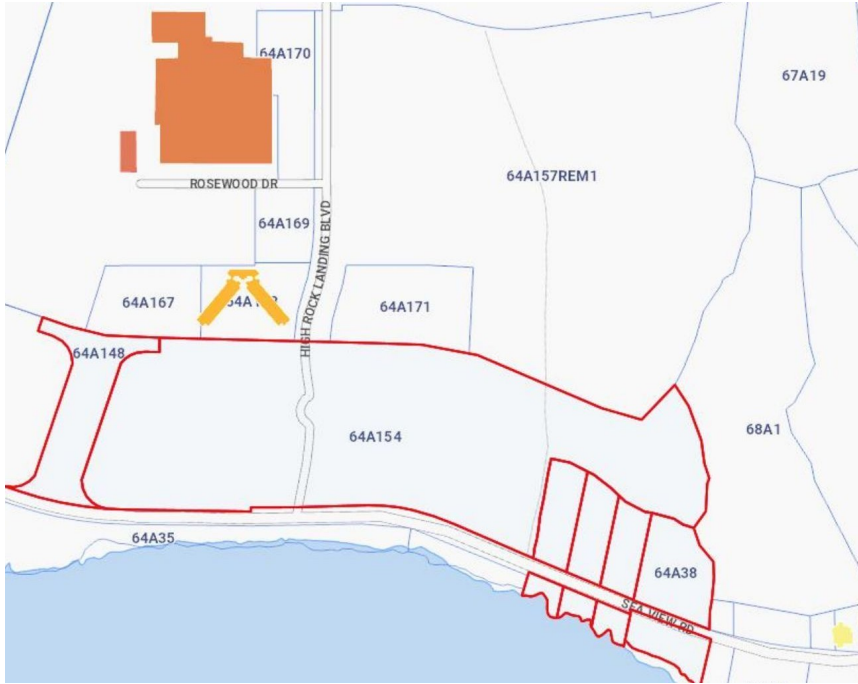





HEALTH CITY SEA FRONT DEVELOPMENT SITE



Fantastic opportunity to develop this seafront parcel which adjoins Health City. Six parcels totaling 34 acres of Planned Area Development offers the ability to create a mixed use development including hotel/tourism, residential and commercial zones withing the PAD.

Location:
 **East End**

Features:

-  **Water Front, Water View**
-  **Beach/Hotel/Tourism**



MLS: 413158



Michael Binckes
 Sales Associate
 michael.binckes@remax.ky
+1 (345) 945 2011



Kim Lund
 Broker / Owner
 kim.lund@remax.ky
+1 (345) 949 9772

